

# The Bournemouth, Dorset & Poole Multi-Area Agreement



11<sup>th</sup> May 2010

Presenter: Gordon Page,  
Chair of the Multi Area Agreement Board

# Dorset: Coast, Conurbation & Country



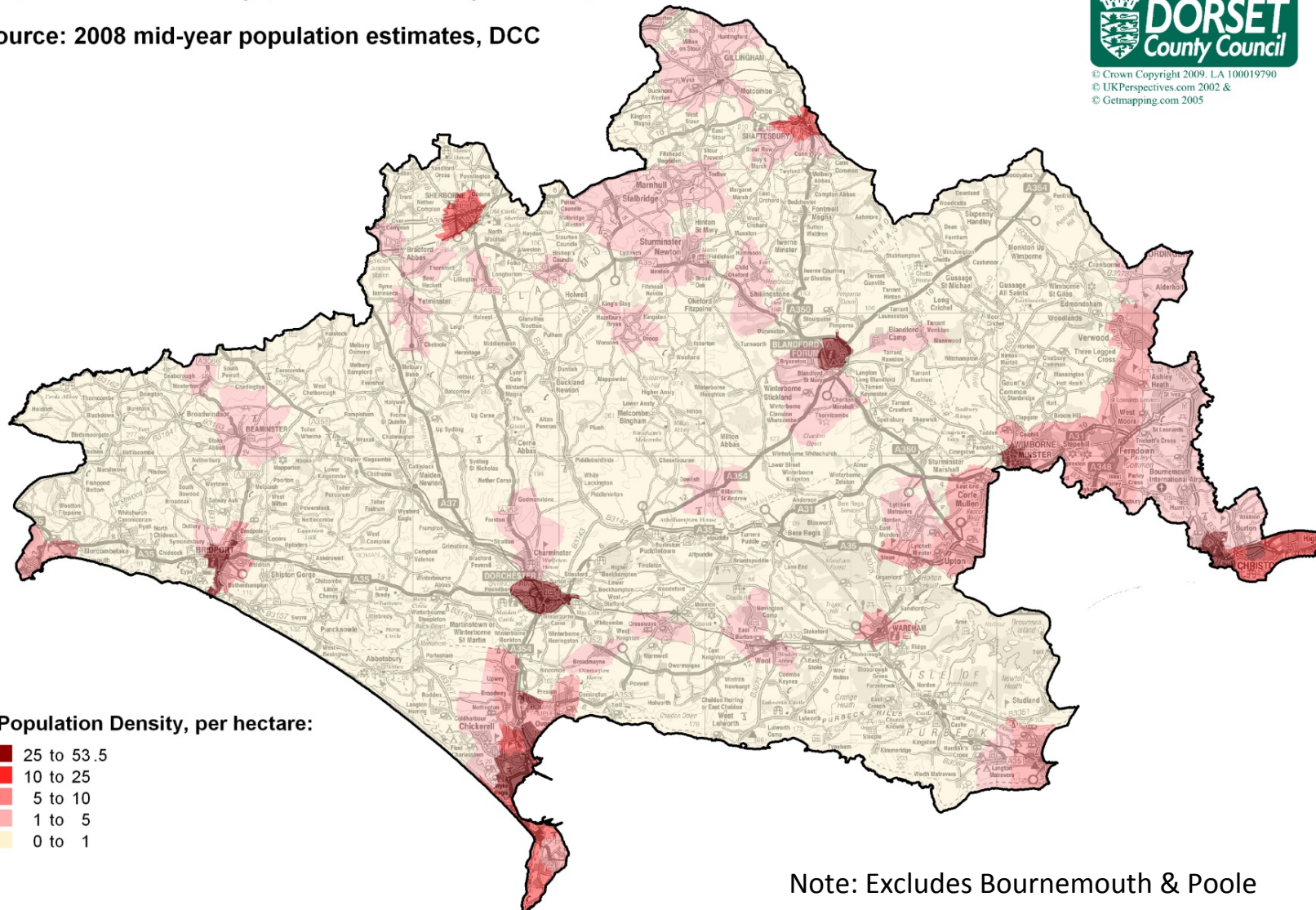
# Dorset population density ( 2008)

Population Density per hectare, by ward/ parish

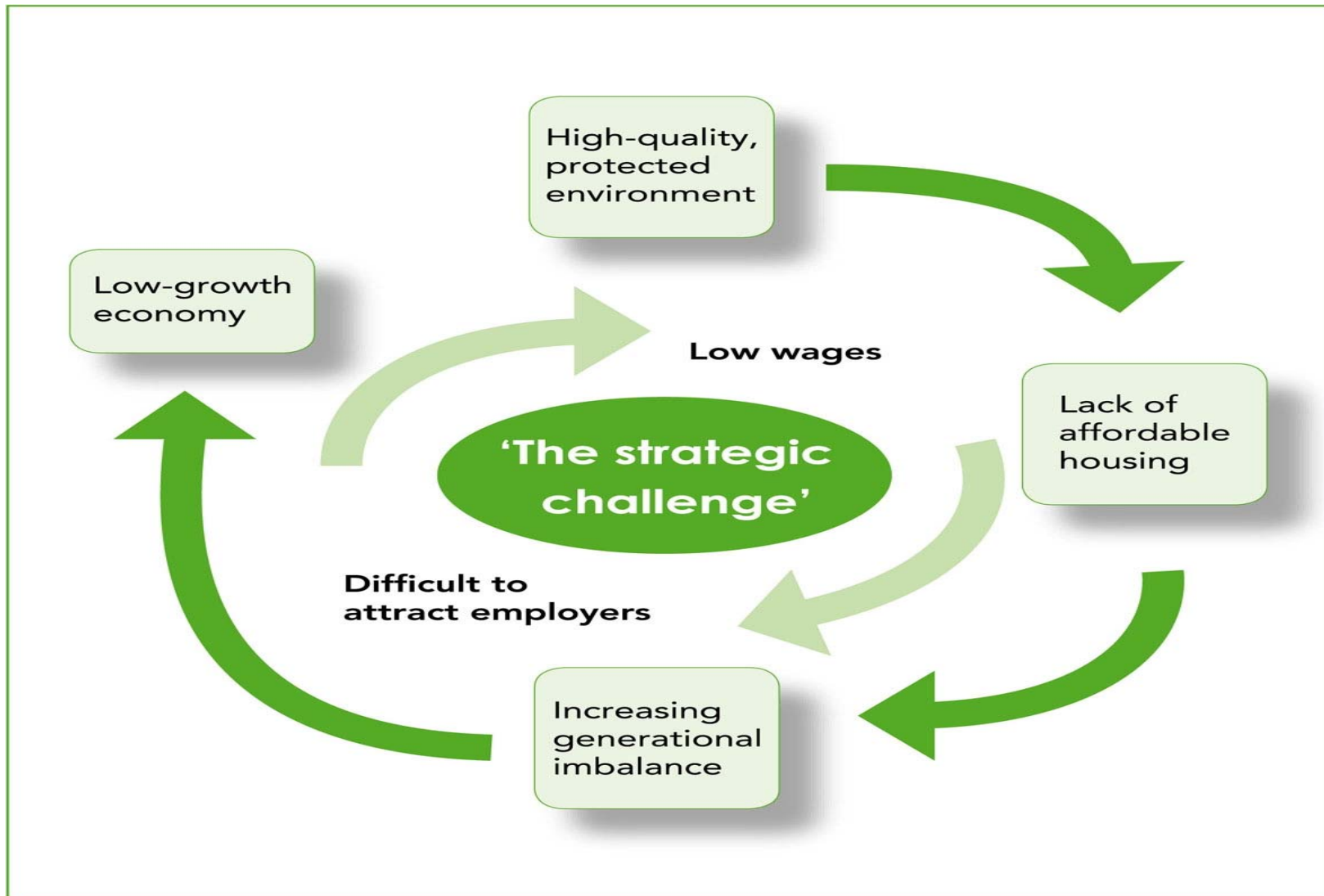
Source: 2008 mid-year population estimates, DCC



© Crown Copyright 2009, LA 100019790  
© UKPerspectives.com 2002 &  
© Getmapping.com 2005

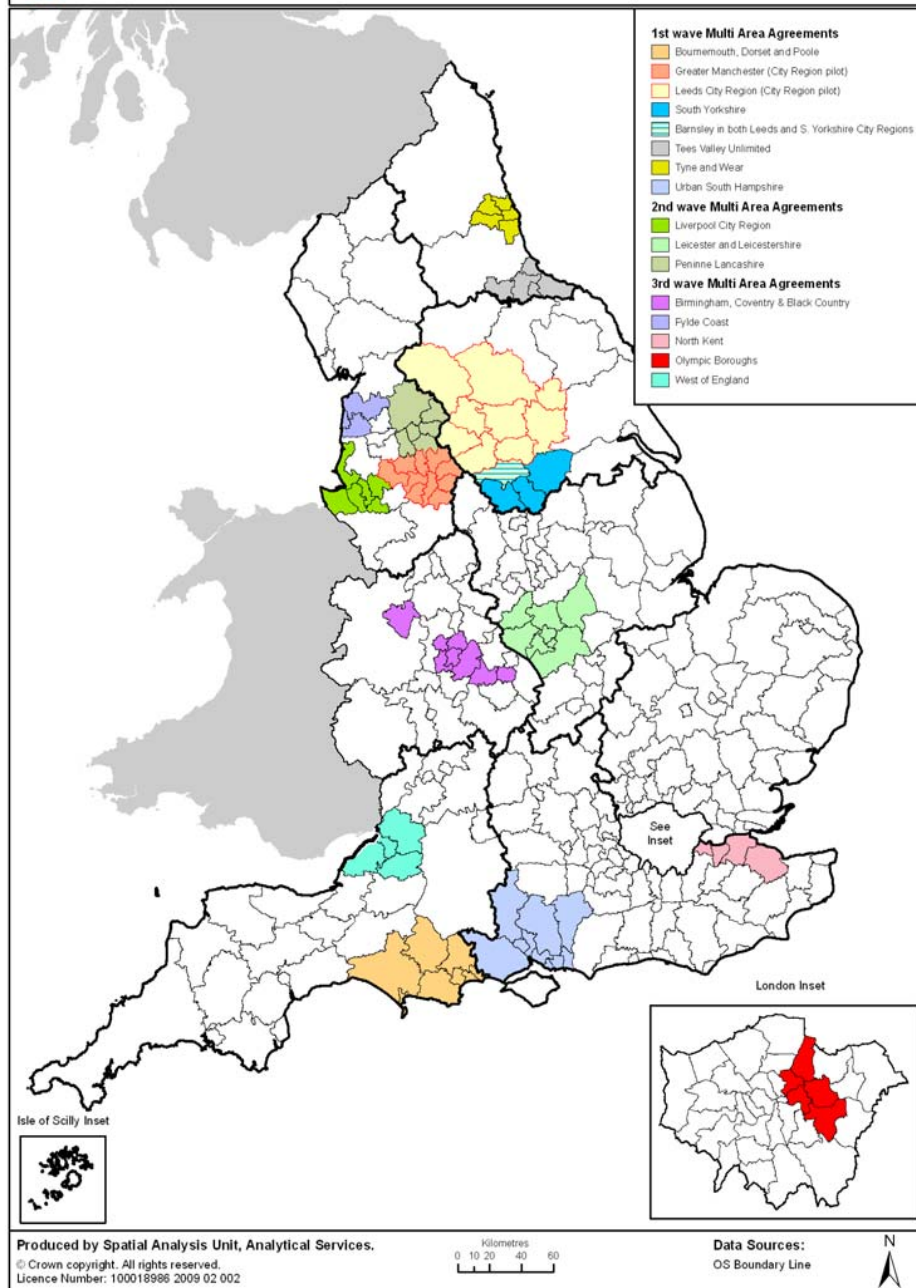


# Dorset's Broad Strategic Challenges



# Multi Area Agreements

- Voluntary agreements involving partnership across local authority boundaries
- Build on the Governments 'sub-national review' of 2007 and other local government legislation that seeks greater co-operation between public bodies and across sectors
- Key themes are broadly focused on economic development: employment , housing, infrastructure development /regeneration, skills, transport
- Likely to have an enhanced status and scope in the future – regardless of government



# Multi-Area Agreements and City Regions

## *First & Second Wave: ( 2008)*

### **Bournemouth, Dorset & Poole**

Greater Manchester  
Leeds City Region  
Tyne & Wear  
Tees Valley  
South Yorkshire  
Pennine Lancashire  
Liverpool City Region  
Leicester & Leicestershire  
Urban South Hampshire

## *Third wave: (2009)*

Birmingham, Coventry & Black Country  
Fylde Coast  
North Kent  
Olympic Boroughs  
West of England

# Our Multi Area Agreement

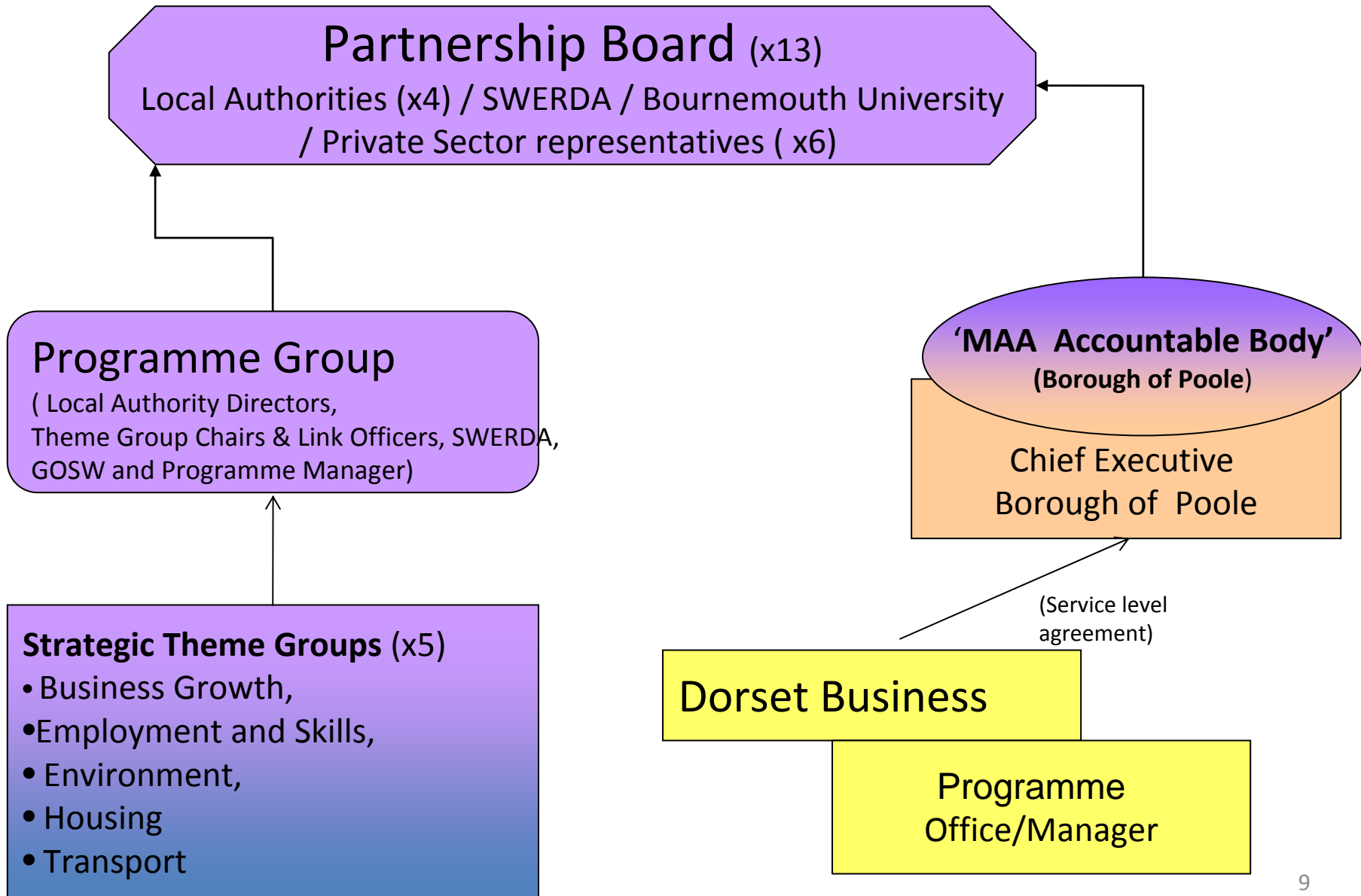
- **VISION:** *To develop a strongly performing economy, characterised by a greater concentration of higher skilled, higher paid jobs than now and to do this while respecting and protecting our unique environment*
- Builds on historic co-operation between the three strategic local authorities and six districts
- Focused on long term economic development – engaging public and private sector to 2026
- Different from other MAA's in its urban/rural mix, 'whole county' configuration and inclusion of an 'environment' theme

# Multi Area Agreement: Outcomes

Theme	Outcome (Period I: 2008->11)
Business Growth	To increase Gross Value Added (GVA) / employee relative to England performance (%)
	To reduce the gap between median earnings in the Sub-region and those in Great Britain (%)
Skills	To secure a higher proportion of the population aged 19 – 64 qualified to at least level 4 or higher (NI165)
	To improve graduate retention and employment within the local economy
Transport	Reduce growth in congestion ( NI167)
	Provide new key employment sites with good access
	Improve connectivity to South Hampshire and London
	Improve connectivity to Bristol and the North
Environment	Develop environmental ‘limits/means’ decision-support tool



# Partnership Organisational Structure



# Building a Green Knowledge Economy (GKE)

- The 'Green Agenda' (resilience to climate change, resource efficiency and ecosystem protection) is shifting to the centre of the economy and society
- EU, UK and SW policy drivers for a low carbon economy will offer opportunities for new jobs and new business
- 'Greening' the existing economy will support familiar sectors but also new technologies, markets and skills
- Bournemouth Dorset and Poole has some comparative advantages:
  - natural capital
  - Environmental Goods & Services knowledge base
  - engineering cluster
  - political/community support for a 'green society'

*...the MAA provides a window of opportunity*

# Business Growth theme: Current Activity

1. Early stage work to promote sub-region to suppliers/constructors of the **'West of Isle of Wight'** wind-farm
2. Establishment of a single **shared procurement** unit for Dorset's county/district /borough councils with objectives promote localised, sustainable suppliers
3. **Broadband service enhancement and extension** linked to BT provision of high capacity fibre-optic for the Olympics and public sector retendering
4. Completion of a joint sub-region wide **'economic assessment'** by local authorities to inform future strategy



# Environment theme: Current Activity

1. Mapping of 'environmental goods and services' sector to inform future strategy
2. Establishment of 'ambassadors' group from green businesses to support programme
3. Low Carbon Resource Efficient Business support project



# Housing theme: Current Activity

1. **Sub-regional theme group** established
2. Negotiation with the Homes and Communities Agency to agree a **Local Investment Plan** to fund housing and commercial area regeneration projects
3. Project to improve the **energy efficiency** of housing stock through retrofit of windows/insulation etc..



# Skills & Employment Theme: Current Activity

1. Establishment of **Employment and Skills Board** for sub-region
2. Development of **'Skills Strategy'** for sub-region
3. Ongoing **graduate retention** schemes (eg...STRIDE – Bournemouth University)
4. New emphasis on **level 3 qualifications for** skilled manual/process workers
5. Successful bid for 500 **'Future Jobs fund' support** places



# Transport theme: Current Activity

1. Sub-region wide joint **Intelligent Traffic Management System** project – commencing with construction of a Joint Traffic Management Centre for the whole of Dorset in Poole
2. Progressing a **multi-modal transport study** for South East Dorset to better inform future investment planning
3. Negotiation with Government of a sub-regional strategic **Local Transport Plan** (the first for both the south east conurbation and more rural Dorset)



And .....ALSO we have the 2012 Olympics sailing venue.....!





# Any questions?



# Thank You

